

Pavement Recycling and Reclaiming Center



Western States Regional In-Place Recycling Conference

September 11-13, 2012

Pavement Recycling Center Team Members



Dr. Stephen A. Cross, PE
Executive Director
steve.cross@okstate.edu



Dr. Dragos Andrei, PE
Technical Director
dandrei@prrcenter.org

PRRC Mission



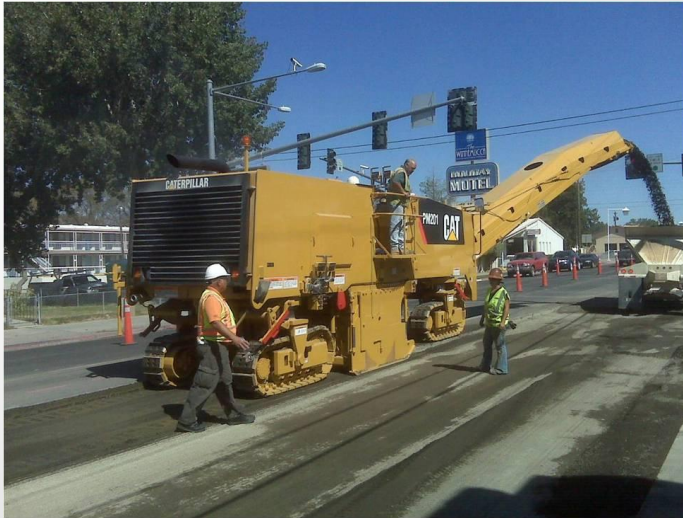
- ▶ **To advance the state of the art and state of practice in pavement recycling and reclaiming and to provide public agencies with the tools and knowledge necessary to complete successful pavement recycling and reclaiming projects. We will serve both agencies and industry by providing an independent and objective forum for discussion, development, and advancement.**

Sponsors

- ▣ California Department of Transportation – *Caltrans*
- ▣ Asphalt Recycling & Reclaiming Association www.ARRA.org
- ▣ Founders Circle Members



Cold Planing



Hot In-Place Recycling



Cold Recycling



Full Depth Reclamation



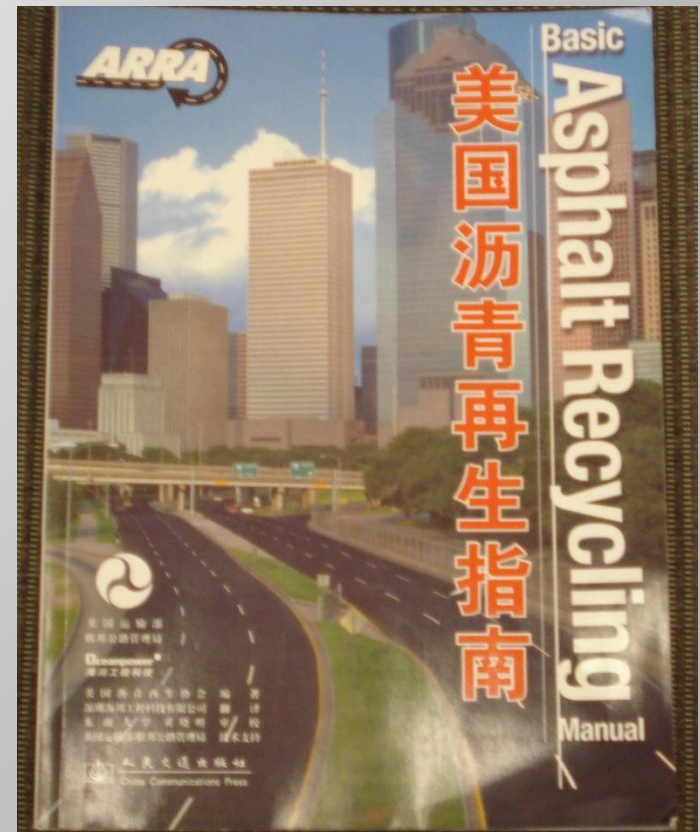
PRRC Resources

- ▶ **Education and Outreach**
- ▶ **Sustainable Pavements Toolbox**
- ▶ **Innovation and Research**



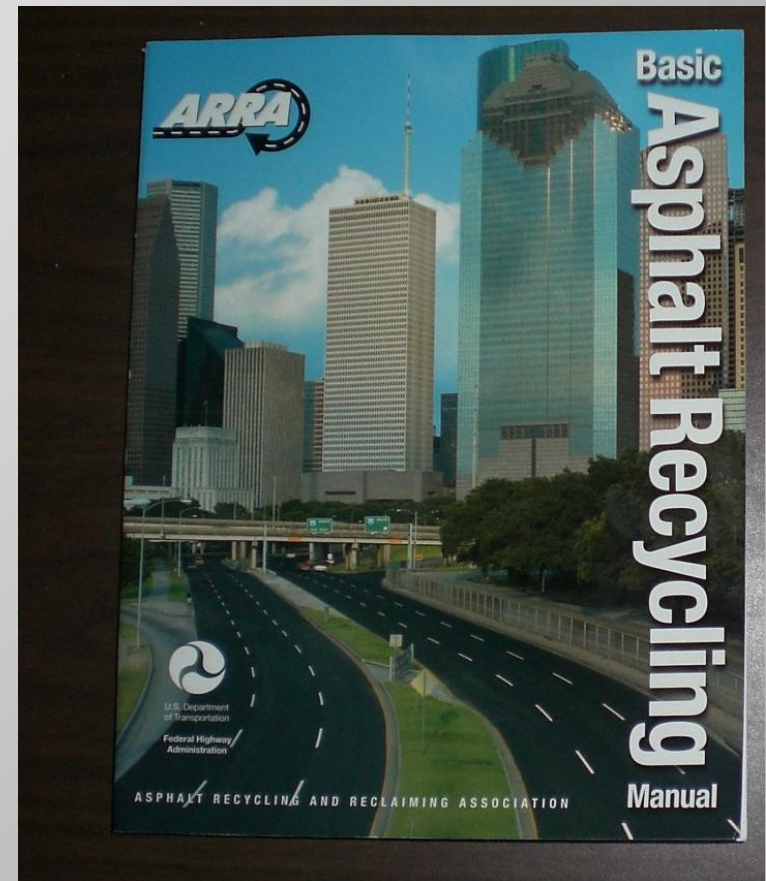
Publications

- **ARRA's Basic Asphalt Recycling Manual (BARM)**
 - Published 2002
 - Translated into Chinese and Spanish
 - Covers 4 disciplines CP, HIR, CR and FDR
 - Project selection, design, construction



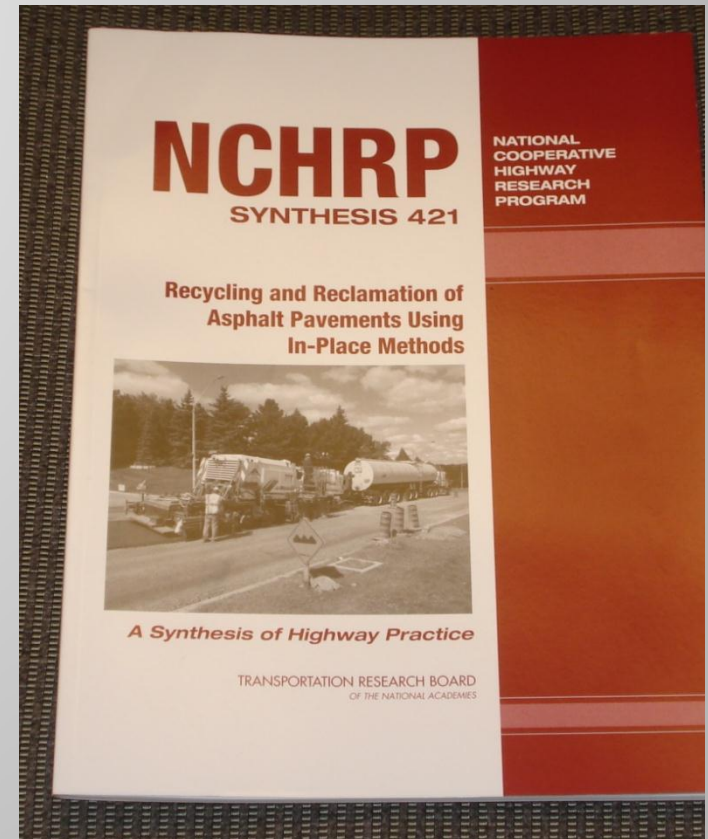
Publications

- **Update ARRA's Basic Asphalt Recycling Manual (BARM)**
 - Contract FHWA to assist with revision of BARM
 - Published early 2013
- **Virtual BARM**
 - Contract with Oklahoma Transportation Center for funds to make portion of BARM interactive



Publications

- NCHRP *Synthesis 421*
Recycling and Reclamation of Asphalt Pavements Using In-Place Methods, A Synthesis of Highway Practice.
- http://onlinepubs.trb.org/onlinepubs/nchrp/nchrp_syn_421.pdf



Publications

- **PRRC Newsletter**
- **Roadmap**
 - Issued quarterly
 - Update of PRRC activities
 - Articles of interest to in-place recycling industry
 - Research update
 - Spotlight Founders Circle member
 - List of upcoming events/meetings



Help Desk



- ▶ E-mail questions:
 - ▶ From ARRA web page (www.ARRA.org)
 - ▶ Directly to me: (steve.cross@okstate.edu)
 - ▶ PRRC web page: (www.prrcenter.org)
- ▶ Try to respond within 48 hours....
sometimes takes little research
- ▶ Frequently Asked Questions

Guide Documents

*Pavement
Recycling*



- ▶ Recommended Construction Guidelines
- ▶ Recommended Preconstruction Sampling & Mix Design Procedures
- ▶ Recommended Quality Assurance Sampling & Testing Guideline
- ▶ Project Selection Guideline

Outreach



- FHWA/ARRA In-Place Recycling Seminars
- Rocky Mountain Asphalt User Producer Group
- NCAT Professor Training Course
- WYCA/WYDOT Training Conference
- *Municipal Roads Technologies Conference, Ontario, Canada*
- Southwest Jiaotong University, Chengdu, China
- 2012 National Pavement Preservation Conference, Nashville, TN
- TRB Annual Meetings

Research



- *Cold In-Place Recycling in New York State*. Final Summary Report, SPR Research Project No. C-06-21, NYSERDA-TORC Contract No. 6764F-2, New York State Department of Transportation, Albany, NY, July 2010, 248 pp. Chesner Engineering & S. A. Cross.
- *Cold In-Place Recycling (CIR) Study*. Central Federal Lands Highway Division. Sept. 2012, 203 pp.
- PRRC (Caltrans)
 - High RAP Study
 - CIR Study

Education and Outreach



➤ Certification/Training Class

- Preconstruction Personnel Trainer (PPT) Certification
- QA Technician Certification
- Agency Inspection Training
- Just in Time Trainer Certification

Sustainability Toolbox



- ▶ Project Registration Database
 - ▶ Agency documentation of benefits of utilizing recycling and reclaiming technologies
 - ▶ Sustainability calculator
 - ▶ Numerous LCA computer programs being reviewed
 - ▶ Equal comparisons?

Visit us @ www.PRRCenter.org

- ▶ News, information, help desk
- ▶ Guide Specifications, Best Practices

For more information please contact:

Steve Cross, Ph.D., P.E., Executive Director
405.744.7200 | steve.cross@okstate.edu

Dragos Andrei, Ph.D., P.E., Technical Director
909.979.6650 | dandrei@prrcenter.org